

MONTHLY MEMBERSHIP PROGRESS REPORT

LOCATION INDIA

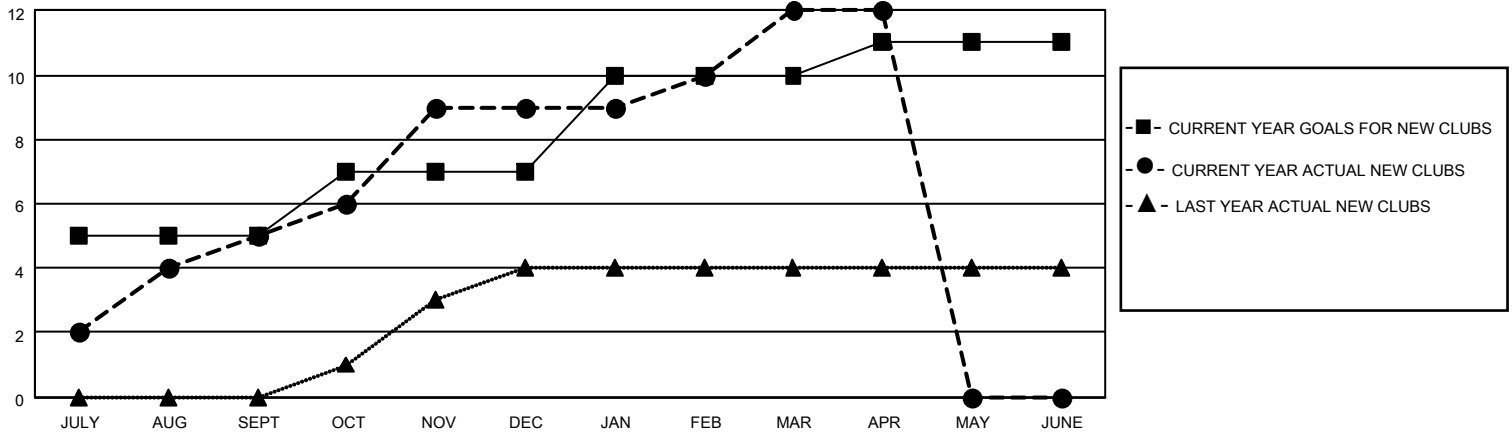
District 317 D

Results as of: 4/30/2022

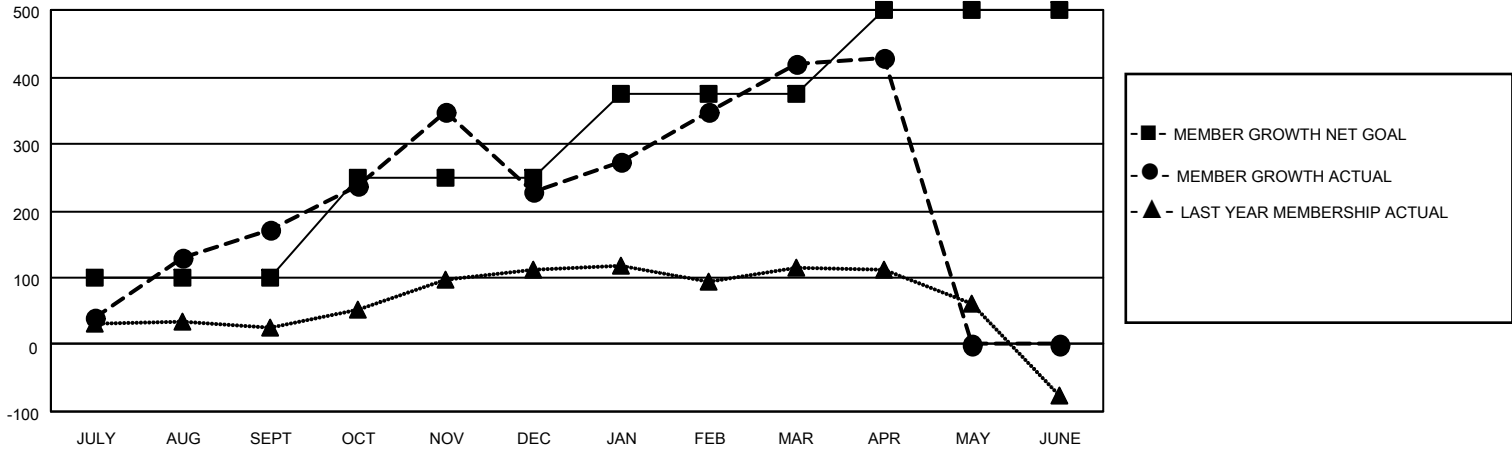
Clubs			
RESULTS FOR 2021-2022			
QUARTER	NEW CLUB GOAL	NEW CLUBS	DROPPED CLUBS
JULY/AUG/SEPT	5	5	0
OCT/NOV/DEC	2	4	2
JAN/FEB/MAR	3	3	0
APR/MAY/JUNE	1	0	0

Members			
RESULTS FOR 2021-2022			
QUARTER	MEMBER GROWTH NET GOAL	MEMBER GROWTH ACTUAL	DROPPED MEMBERS ACTUAL (including transfers)
JULY/AUG/SEPT	100	270	76
OCT/NOV/DEC	150	259	197
JAN/FEB/MAR	125	213	21
APR/MAY/JUNE	125	26	16

GOALS AND ACTUAL NEW CLUBS CUMULATIVE



GOALS AND ACTUAL MEMBERS CUMULATIVE



DROPPED CLUBS: 2

85 CLUBS OF 111 ADDED 1 OR MORE NEW MEMBERS

GENDER DISTRIBUTION

DROPPED MEMBERS

DECEASED	12
CLUB CANCELLED	46
OTHER	251
TOTAL	309

[CLICK HERE FOR CUMULATIVE MEMBERSHIP DATA](#)

MALE	3,148 (75.97%)
FEMALE	996 (24.03%)
NON BINARY	0 (0.00%)
PREFER NOT TO ANSWER	0 (0.00%)

TOTAL FAMILY UNIT MEMBERS 1,460

FAMILY MEMBERS PAYING HALF DUES 746